



Old Bethnal Green Road, London, E2

BUTLER & STAG





## Well-presented two bedroom apartment within a handsome double fronted Victorian residence in a prime Bethnal Green location.



- Two Double Bedrooms
- Ideal for a Couple / Two Sharers
- Close to Underground and Overground Stations
- Furnished
- Charming Period Features
- Prime Bethnal Green Location
- Semi Open-Plan Kitchen / Reception Space
- Available 7th February 2025

Situated on a quiet road close to Bethnal Green underground and overground stations, the green open spaces of Weavers Fields, as well as the iconic Columbia Road flower market, is this charming first floor apartment.

Perfectly suited to two professionals - either a couple or two sharers, the property consists of two double bedrooms, a bright and spacious reception area which is semi open-plan to a fitted kitchen and is completed by a white-tiled bathroom.

Offered furnished, this apartment is available from 7th February 2025.

EPC Rating C  
Council Tax Band D





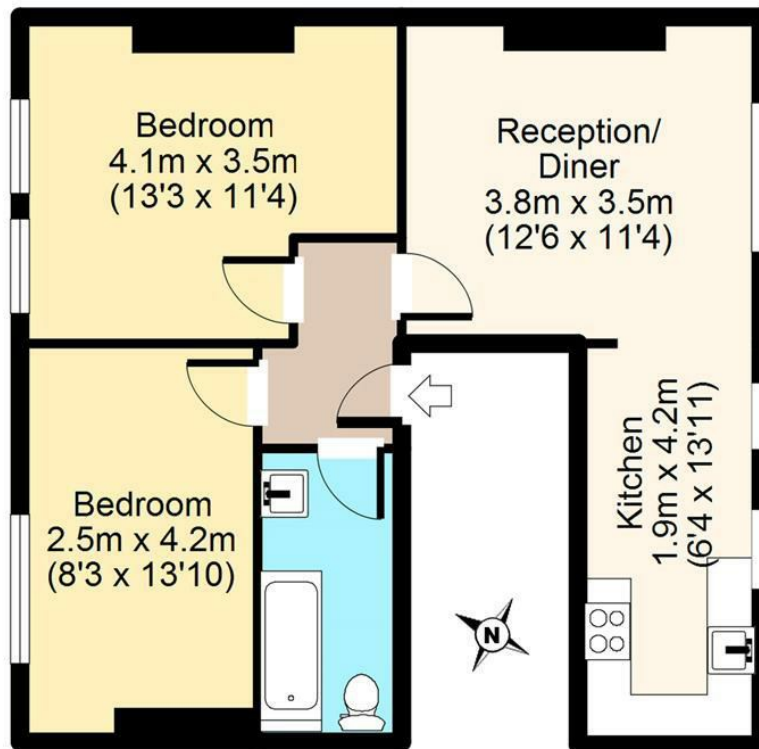


# Old Bethnal Green Road, E2



## First Floor

Approx. 53 sq. meters (565 sq. feet)



Total area: approx. 53 sq. meters (565 sq. feet)

For illustration purposes only - not to scale

IMPORTANT NOTICE - These particulars have been prepared in good faith and they are not intended to constitute part of an offer or contract. We have not performed a structural survey on this property and the services, appliances and specific fittings have not been tested. All photographs, measurements, floor plans and distances referred to are given as a guide and should not be relied upon.

# BUTLER & STAG

☎ 020 8102 1236

🏠 508 Roman Road, Bow, London, E3 5LU

✉ bow@butlerandstag.com

[www.butlerandstag.uk](http://www.butlerandstag.uk)